

PERMANENT TEST STATIONS

Model: TP-006

Document No.: 06-400-R1

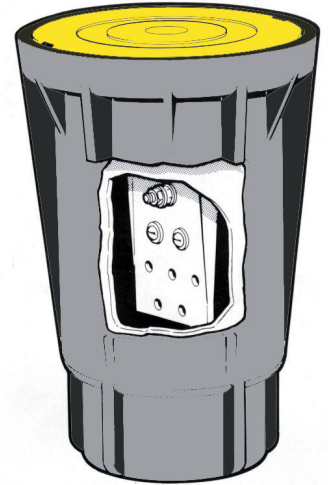
Sheet: 1 of 1

German Cathodic Protection

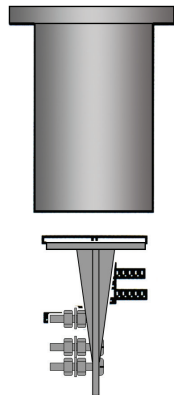


Model: TP-006 (FLUSH FINK®)

- Flush mounting surface chamber for use in trouble some locations where water, street traffic and other adverse conditions exist. The chamber will maintain its structural integrity during hard usage and is suitable for installation in asphalted areas.
- The chamber can be used as a test station with 5 or 8 connections or as an access hole for placing reference cells.
- The chamber is made of non-corrodable durable glass filled polycarbonate that is resistant to ultraviolet radiation and guarantees dimensional and electrical stability between -15° C and 120° C.
- All electrical terminals are maintained in a dry environment even if the chamber is completely submerged.
- The terminals are completely accessible from both sides of the terminal board and the board can be easily removed from the housing and retrieved for easy access when taking test readings.
- Available with colour-coded lids in a choice of black, blue, red, orange, yellow, green, white. Other colours available on request.
- The lid is fitted with a metallic detector so that the unit can be located even it becomes completely covered , for example by asphalt.



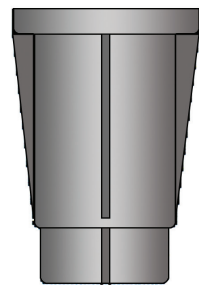
Watertight bell, terminal board and housing are made from Makroblend® polycarbonate alloy. FLUSH FINK® is impervious to impact, traffic loads and chemical spills common to street usage.



Standard nickel plated brass or optional stainless steel terminals for guaranteed long service life. Up to 11 terminals accessible from both sides of the board.

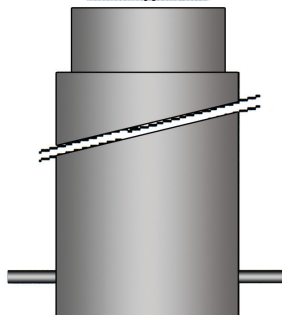
Accessories:
All FLUSH FINK® terminal boards can accommodate shunts, resistors, banana jacks, locking devices, lightning arrestors etc.

Support posts are made of PE (polyethylene). Optional polycarbonate is available for the toughest applications. Standard length: 1 foot - available to 40 feet with Cott's telescoping extender.



Dimensions:
5 1/2" Diameter x 8" height fits 4" schedule 40 pipe

Anchor: polyethylene pipe on the lower post prevents removal.



Model	No. of Terminals	Colour
FF-5-1	5	black
FF-5-2	5	blue
FF-5-3	5	red
FF-5-4	5	orange
FF-5-5	5	yellow
FF-5-6	5	green
FF-5-7	5	white
FF-8-1	8	black
FF-8-2	8	blue
FF-8-3	8	red
FF-8-4	8	orange
FF-8-5	8	yellow
FF-8-6	8	green
FF-8-7	8	white
FF-0-1	-	black
FF-0-2	-	blue
FF-0-3	-	red
FF-0-4	-	orange
FF-0-5	-	yellow
FF-0-6	-	green
FF-0-7	-	white