

SACRIFICIAL ANODES

Zinc anodes

Document No.: 05-200-R1

Sheet: 1 of 2

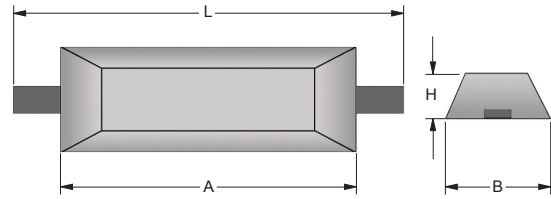
German Cathodic Protection



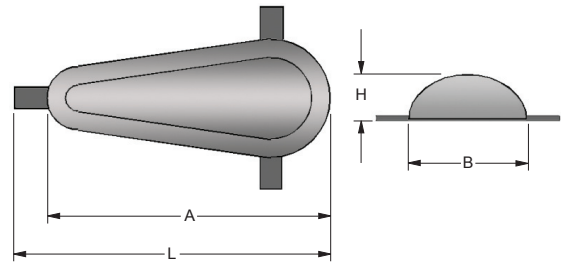
Standard Zinc Hull Anodes

Type	Anode weight kg	Zinc weight kg	A mm	B mm	H mm	L mm
2	0.25	0.21	100	35	15	132
5	0.5	0.44	120	46	23	160
10	1.0	0.90	140	62	28	210
20	2.0	1.90	180	90	30	210
35	3.5	3.20	220	100	29	300
55	5.5	5.10	268	110	32	350
102	10.2	9.30	350	150	32	450
155	15.5	14.70	600	120	44	700
235	23.5	22.20	960	120	39	1060

All weights and dimensions are nominal and subject to variation in material compositions. Alternative configurations may be cast to requirements.

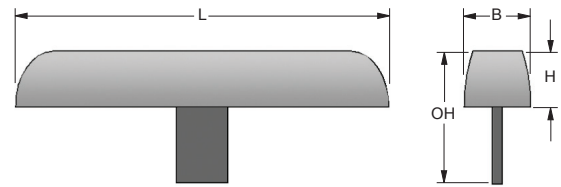


Type	Anode weight kg	Zinc weight kg	A mm	B mm	H mm	L mm
22	2.2	2.1	230	77	32	300
105	10.5	9.6	405	220	35	445
145	14.5	13.5	405	220	45	445



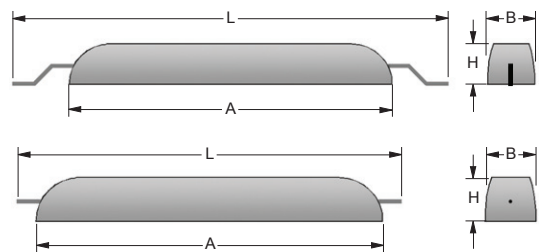
Standard Zinc Tank Anodes

Type	Anode weight kg	Zinc weight kg	B mm	H mm	OH mm	L mm
50T	5.0	4.4	47	40	140	400
105T	10.0	9.4	70	60	140	400



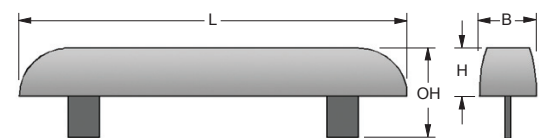
Centre stand-off leg for welding or bolting

Double cranked or straight core						
Type	Anode weight kg	Zinc weight kg	A mm	B mm	H mm	L mm
140T	14.0	12.6	1235	40	40	1365
225T	22.5	20.3	1235	50	50	1415
305T	30.5	28.3	1235	58	58	1415



Extending core Ø 12 mm
Extending core Ø 16 mm
Extending core Ø 25 mm

Type	Anode weight kg	Zinc weight kg	B mm	H mm	OH mm	L mm
220T	22.0	20.2	64	51	145	1235
300T	30.0	28.2	68	58	145	1235
450T	45.0	42.7	76	63	150	1600
500T	50.0	48.1	78	68	150	1600
570T	57.0	55.0	86	66	150	1600



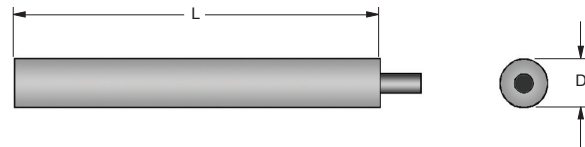
Centre stand-off leg for welding or bolting

All anodes can be delivered with clamps for weld-free mounting

Standard Zinc Anodes for Cooling Systems

Type	Anode weight kg	Diameter mm	L mm
12 K/33	0.03	12	30
12 K/90	0.07	12	90
12 K300	0.25	12	300
13 K	0.05	13	56

With Ø 5 mm core, M5, extending 10 mm



With 3/8" WG, extending 10 mm

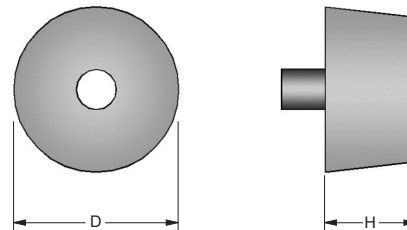


Type	Anode weight kg	Diameter mm	L mm
17 K	0.5	17	300
22 K	0.5	22	200
28 K	1.7	28	400
30 K	1.6	30	320
40 K	2.0	40	215
50 K	2.9	50	215
60 K	4.5	60	215
70 K	5.8	70	215
80 K	7.5	80	215

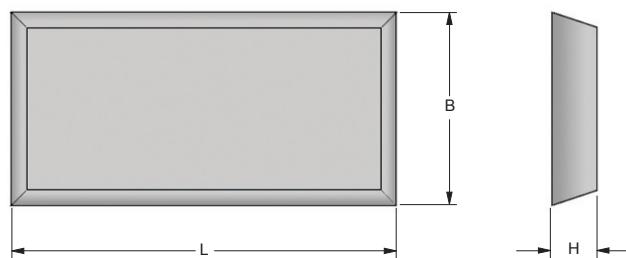
with Ø 5 mm core or without core
 with Ø 5 mm core or without core
 with Ø 5 mm core or without core
 with Ø 5 mm core or without core
 with Ø 5 mm core or without core
 with Ø 1/4" tube core or without core
 with Ø 3/8" tube core or without core
 with Ø 3/8" tube core or without core
 with Ø 1/2" tube core or without core

With Ø 3/4" tube core, extending 25 mm or without core

Type	Anode weight kg	Diameter mm	H mm
78 K	1.2	78	45
140 K	2.5	140	25
180 K	4.2	180	25
200 K	5.1	200	25



Type	Anode weight kg	L mm	B mm	H mm
KBS 1	1.5	240	45	20
KBS 2	2.0	190	100	15
KBS 3	7.1	220	150	30
KBS 4	7.0	220	130	34
KBS 5	0.9	170	50	15
KBS 6	0.3	120	50	12



Chemical Composition (U.S.-Mil-A-1800 1 K)	
Al	0.10 - 0.50 %
Cd	0.025 - 0.07 %
Fe	0.005 % max.
Cu	0.005 % max.
Pb	0.006 % max.
Others	0.10 % max.
Zn	99.31 % min.
Potential Cu/CuSO ₄	-1.10 V
Capacity	780 Ampere hours per kg
Consumption	11.2 kg per Ampere year
Efficiency	95 %

All weights and dimensions are nominal and subject to variation in material compositions. Alternative configurations may be cast to requirements.